

● Value Engineering

Thanks to its capability to project costs and resources within the 3D model, **CostOS** is a true Value Engineering tool that fills the gap that has been missing within the industry for years.

Contractors:

With **CostOS**, you can improve your marketing and impress your clients by providing them with a Model Based offer. Invite them to your office and show them in 3D where their money is spent, and how much it will cost them to acquire every element of their project, including Structural, Architectural, HVAC, mechanical and process elements. With **CostOS**, work out the most cost effective solution and provide them with True Value Engineering. **CostOS**'s unique features will definitely improve your position against competitors and will enable you to build long term relationships with your clients.

Engineers:

Estimate the cost of your designs in just a few minutes. Start realizing which are the most cost and labor intensive parts of your project and work out ways to encompass value engineering. Demonstrate to the project owners and justify to them the cost of their project in 3D. Invite them to your office to co-operate and translate your design into a common language for them: money. Start marketing your services as true value engineering services and start building strong relationships with your clients. Create the bidding documents very quickly with accurate quantities extracted from your model. **CostOS** will bring you more jobs and it will depreciate its price on the first job that you will analyze.

Project Owners

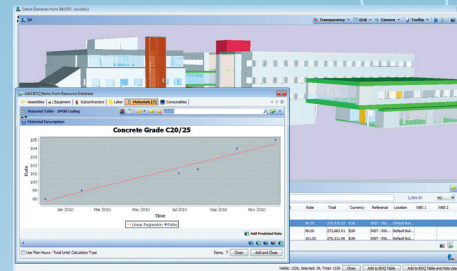
As a project owner, you have made an investment, and you deserve the best services and a clear picture of the cost of your project. With **CostOS**, by implementing the offers based in BIM, or creating your estimate on the 3D model, you will know exactly where your money is spent. Each element on the 3D model has cost assigned to it, as well as resources (i.e. Subcontractors, Material, Labor, Equipment, and Consumables). With **CostOS**, your money is virtually converted to the different parts of the project and together with the engineers and the contractor you can work out the best value for money. Change orders are eliminated and the "estimate what you see method", ensures that there are no omissions on your budget. Moreover, by asking your contractors to submit their bids in **CostOS**, it is very easy to check and identify who is delivering the best value to your project, and who is going to finish on time, delivering project value and profit. With **CostOS**, each 3D element will encompass the quote or the offers you received for its delivery from different contractors and you can make better judgments about to whom you are going to award the project. Start receiving fully justifiable bids, and more importantly, in a way that can be easily presented and understood - on your 3D model!

● Quote Management

If you are a project owner or work for a general contractor, then a substantial amount of your time may be spent preparing requests for quotes (RFQs) and managing the responses you receive. **CostOS**'s fully intuitive quote management engine streamlines this process and allows you to create a powerful database based on the contractors, subcontractors or suppliers quotes.

Select the items or the project parts for which you are going to request quotes. Locate the appropriate contractors, subcontractors and suppliers stored in your database. Find out on the map their distance from your project and automatically create RFQs to be sent via e-mail with an Excel file attached and formatted based on your company's templates and colors. Once you receive responses on the Excel file, rates can be imported into your project file and you can decide about successful quotes one by one or based on criteria such as best price, highest performance and quality.

All the data you collect and store on your database can be trended and used for future predictions.



● Enterprise Project Structure

With **CostOS**, large organizations that have multiple sectors can retain all their projects grouped under a unique enterprise project structure. On this panel users with privileges can create subprojects to be assigned to other group members as well as WHAT-IF projects to run different scenarios.

High level managers can review the status, accuracy and percent complete of the present and past estimates and locate them on the Map. This allows you to also ascertain quick figures for different types of projects, on different locations, based on your organization's historical data and thus make quick but fully justifiable decisions. Class 5 estimates can have a substantially increased accuracy when performed in this way!

 **CostOS™ Estimating**

redefining cost estimating

 **nomitech**
new open mind technologies

www.nomitech.eu

CostOS Estimating has been specifically designed to become the everyday tool of the estimator. Simple to learn and easy to use, it incorporates the most modern methods of cost engineering and it is currently at the cutting edge of estimating technology. CostOS will give you the advantage to surpass your competitors by standardizing your estimating process and becoming more effective and accurate in your estimating.

The solid theoretical background and the centralized relational resource databases make CostOS fully scalable and applicable in various industry sectors. Its ability to truly integrate with other systems, will allow your company to streamline its processes and promote the collaboration of the estimating department with the planners, project managers, quantity surveyors, designers and clients. The embedded BIM technology of CostOS will also bring you closer to the new era of the AEC (Architecture / Engineering / Construction) industries.

● Functionality

CostOS is fully functional. It allows you to smoothly search (as in Google) millions of historical entries, get the results grouped and navigate easily through them. Forget the hassle of creating filters, or navigating through complicated coding systems to find the data you need. Set your criteria in the search box and perform searches instantly. Assign resources while working with BOQ Items, with no need to go back and forth to the libraries. Create and assign WBS and Group Codes with a click of button and easily amend or replace resources and productivities with those that match your needs. The built-in Artificial Intelligence of CostOS hugely facilitates data entry by auto-filling all necessary data fields that have been previously defined.

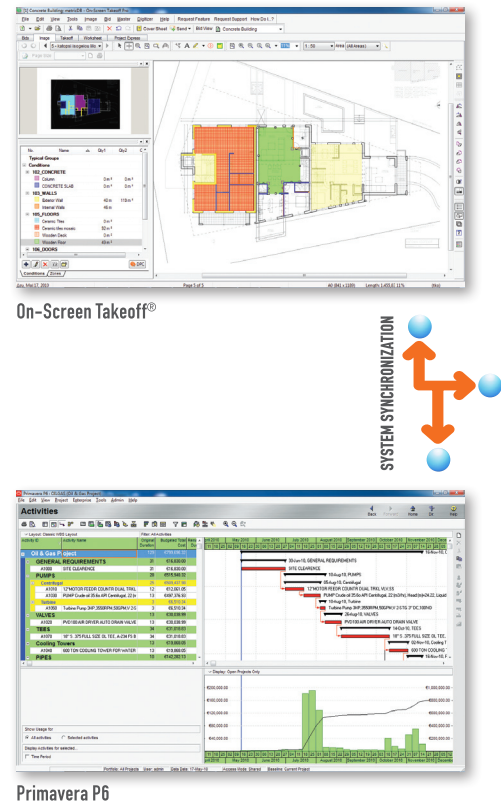
● Collaboration and Consistency

CostOS works over webservices allowing users and offices in different locations to

connect with the centralized database. You can define roles, teams and levels of access and let your team collaborate in real time. Colour coding of the BOQ Items and statistics enable you to see how the estimate is progressing.

● Online Databases

Nomitech is the first company to provide third party databases online, enabling you to get the most up-to-date cost information. Subscribe to the RSMMeans, Richardson's, Spon's and NODOC databases and perform searches to one or to all of the databases on which you are subscribed, at once. The Online databases allow you to update your previous estimates and synchronize them with the current rates with the click of a button. Online databases are offered as relational resource databases. This means that when using their line items you also get the resources (human, material and equipment resources) together with their productivity, which were used to calculate the rates. Moreover, you can find links to supplier websites and pdf files containing technical specifications, equipment characteristics and methodologies. The NODOC database will also give you a list with proposed suppliers for the Materials you need. You can imagine how easy it becomes adjusting the online databases to fit the way you work and using their productivities to calculate activity durations. Ultimately, you can create copies of the adjusted assemblies to your server database, you can use just the resources that are provided by the online databases and finally find the technical specs and assumptions that accompany the data provided.



● International Estimating

CostOS fully supports international estimating and thus EPC projects. With CostOS you can define up to sixty currencies and get the current exchange rates from the Internet at an instant allowing you to predict how the exchange rates will fluctuate throughout the project execution and perform hedging. With CostOS you can also receive updates of the exchange rates and automatically synchronize your estimate with them. Also, you define the fuel rates on the project location and calculate accurately the equipment operating cost. With CostOS you can also retain accurate records of the location of the resources and the suppliers used for future reference. Easy transition, integration with Excel™, and risk analysis modelling set up Taking the decision to move from spreadsheets to a comprehensive estimating system has become easier than ever thanks to CostOS. CostOS enables you to import, export and synchronize the historical data that is stored in spreadsheets with your database. It is also simple to import your Bill of Quantities and the project WBS from spreadsheets and start estimating your project. Formulas in Excel are also supported in import and export format. The last feature allows you to have your models ready for risk analysis with systems that run through Excel like Palisade's @Risk.

The image shows a screenshot of the CostOS software interface displaying a detailed Bill of Materials (BOM) table. The table lists various construction items with their quantities, rates, and costs. The items are categorized into different sections like SITE PREPARATION, CONCRETE, WALLS, PLASTER, GYPSUM, FLOORS, ROOFS, and OPENINGS. The table also includes a summary of the total cost and a breakdown of the resources used.

Code	Title	Quantity	Unit	Rate	Markup	Offered Rate	Total Cost	Offered Price
10	SITE PREPARATION						€ 8,633.89	€ 8,633.89
10	Site Clearance	4,000.00	m2	0.75	0.00	0.75	€ 3,000.00	€ 3,000.00
20	Soft Soil Excavation	1,536.00	m3	3.68	0.00	3.68	€ 5,650.54	€ 5,650.54
15	CONCRETE						€ 119,292.70	€ 119,292.70
40	Formwork for elevated slabs	114.00	m2	14.00	0.00	14.00	€ 1,596.00	€ 1,596.00
50	Pouring and curing of concrete C20/25 of elevated slabs	636.13	m3	185.00	0.00	185.00	€ 117,684.70	€ 117,684.70
60	Reinforcement B500c for Slab on Grade	15,800.00	KG	0.56	0.00	0.56	€ 8,848.00	€ 8,848.00
70	Reinforcement B500c for Elevated Slabs	51,200.00	KG	0.56	0.00	0.56	€ 28,672.00	€ 28,672.00
25	PLASTER						€ 4,526.22	€ 4,526.22
120	Exterior walls plastering, exterior	1,392.10	m2	32.00	0.00	32.00	€ 44,544.00	€ 44,544.00
130	Exterior walls plastering, interior	1,392.10	m2	28.00	0.00	28.00	€ 38,978.80	€ 38,978.80
30	GYPSUM						€ 35,998.78	€ 35,998.78
100	Cypsum board walls, interior	654.52	m2	55.00	0.00	55.00	€ 35,998.78	€ 35,998.78
35	FLOORS						€ 40,636.17	€ 40,636.17
180	Wooden Parquet Floors	1,550.09	m2	235.58	0.00	235.58	€ 365,174.99	€ 365,174.99
190	Ceramic Tile Walls on Basement	516.00	m2	70.66	0.00	70.66	€ 36,461.18	€ 36,461.18
45	ROOFS						€ 34,637.62	€ 34,637.62
140	Aluminum roof with steel frame	682.62	m2	50.74	0.00	50.74	€ 34,637.62	€ 34,637.62
55	OPENINGS						€ 115,460.00	€ 115,460.00

CostOS

● Integrating with Oracle Primavera P6

CostOS is fully integrated with Primavera P6 bringing planners and estimators together and allowing them to work consistently. The project estimate can be synchronized with the resource loaded programme in P6 with the simple click of a button. You have the benefit of reviewing the effect of planners' durations on the estimate's total cost instantly and vice versa; and see the effect of updated quantities or changed productivities on the project's duration. The WBS, resources and resource rates, budgeted units and durations/ productivities are synchronized between the two systems allowing you to keep your estimate in line with the Primavera Program, and obtain your cash flows from P6 and explore how you can make optimum resource allocations to your project.

● Synchronizing with Quantity Takeoff®

Discover the true integration with On-Screen Takeoff®. Now the quantity surveyors can work in parallel with the estimators. You do not have to wait for Qs to finish their job to start estimating as CostOS and On-Screen Takeoff® can be fully synchronized. Also, perform your Takeoff from pdf or dwg files and store the quantities in On-Screen Takeoff's database and

link the quantities with your estimate, apply factors and then obtain updated quantities in your estimate instantly. Moreover, see how new quantities or changed drawings affect the project duration, thanks to the ability to synchronise with both On-Screen Takeoff® and Primavera P6.

● Embedded BIM Technology

Are you ready to discover the industries' new standards? CostOS embedded BIM technology enables you to work directly with your geometrical model. Use the "Estimate what you see" method to calculate your costs and perform your takeoff from the 3D model. CostOS uses ifc files allowing you to import models from all popular BIM systems such as ArchiCAD, Autodesk Revit, Bentley Architecture and All Plan.

